

✘ Treasure Hunt: Finding the Lost Traces of Water

✘ 21-22 Fall Semester · PEM 311E · Landscape Design II

✘ Assoc. Prof. Ebru Erbas Gürler · Res. Assist. Arzu Güler



Koyungeçidi Kemerleri ✘

Sinekli Kemer ✘

Eyüp Kubbesi ✘

Eğrikapı Maksemi ✘

Sulukule Kubbesi ✘

Tezgaçlılar Kubbesi ✘

In the mysterious place of Ayyansaray, in the Historical Peninsula of Istanbul, there are some hidden treasures waiting for bringing to light. They were forgotten, lost, buried, destroyed, changed, or unseen. We named them the missing "water nodes."

As a continuum of historical "Kirkcesme Water Main", the place is living under the memory of tangible and intangible memory nodes of water. The water culture represents itself by the myths, oral histories, architectural structures, sea, open areas since the Byzantium Empire, Ottoman Empire, and now Republic Period.

Now, prepare yourself for treasure hunting in order to find the lost traces of the water and claim the treasure unknown.



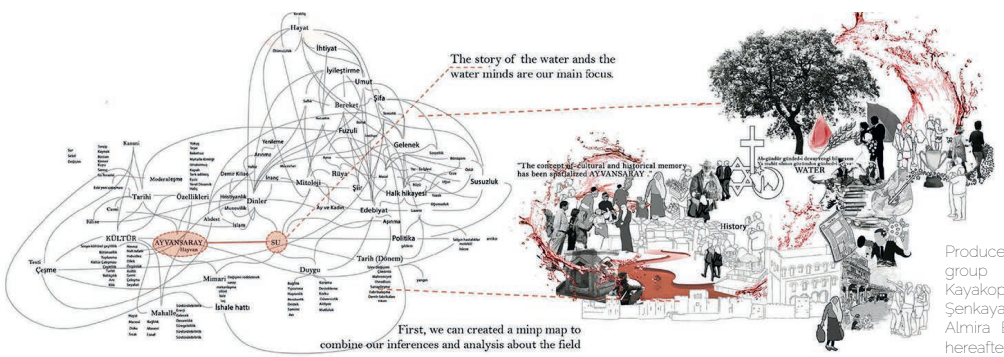


In the mysterious place of Ayvansaray, [the Historical Peninsula of Istanbul], there are some hidden treasures waiting for bringing to light. They were forgotten, lost, buried, destroyed, changed, or unseen. We named them the missing "water nodes". As a continuum of historical "Kırkçesme Water Main", the place is living under the memory of tangible and intangible memory nodes of water. The water culture represents itself by the myths, oral histories, architectural structures, sea, open areas since the Byzantium Empire, Ottoman Empire, and now Republic Period.

Now, prepare yourself for treasure hunting in order to find the lost traces of the water and claim the treasure unknown.

WATER AS A HEALER

Rebeka Kayakoparan



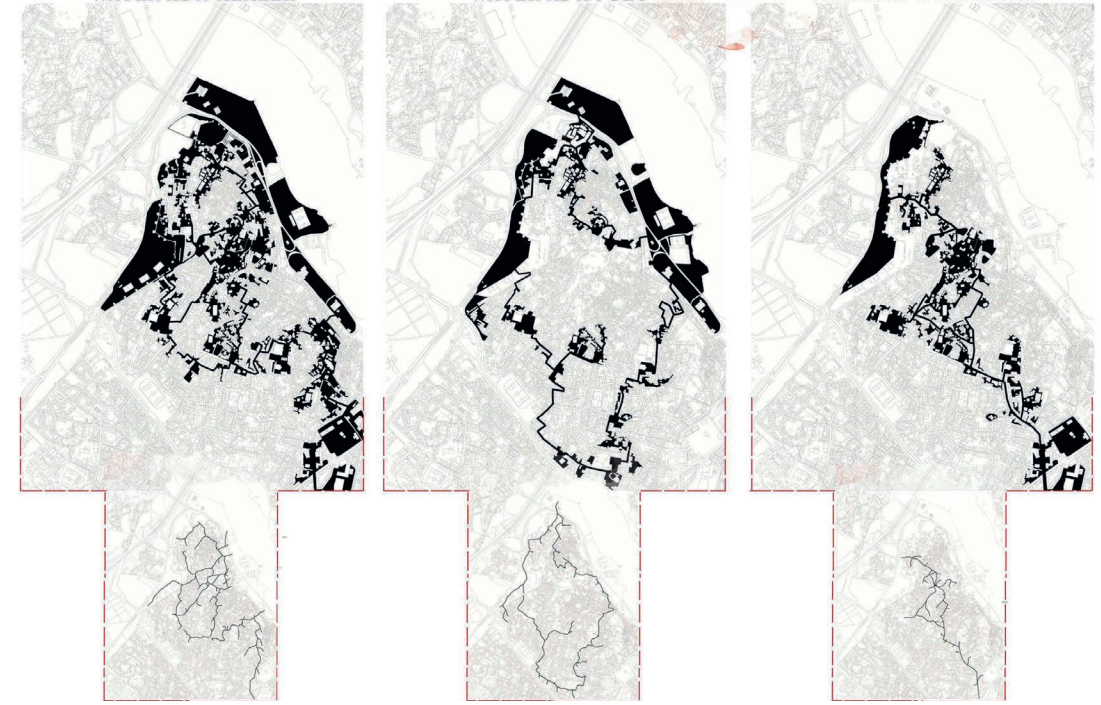
In the Aynasaray project, we focused on the reflection of the water culture that emerged as a result of the fusion of their own cultures, together with the cultures that the Turks passed through on their journey from Central Asia to Anatolia. Our concept idea comes from water legends, stories, history and literature. We examined the distribution of the water coming from Eğrikapi from the main branches to the fountains.

We studied the concept of water as a renewer, poet and healer. The healer route we created comes from the combination of fountains, landmarks, road and green area analysis. The poet's route comes from analyzes of fountains, use of space, evacuation corridors, green areas, roads and protected areas. Its regenerative route comes from analysis of pervititch, fountain, curvikapi waterway, road and green area.

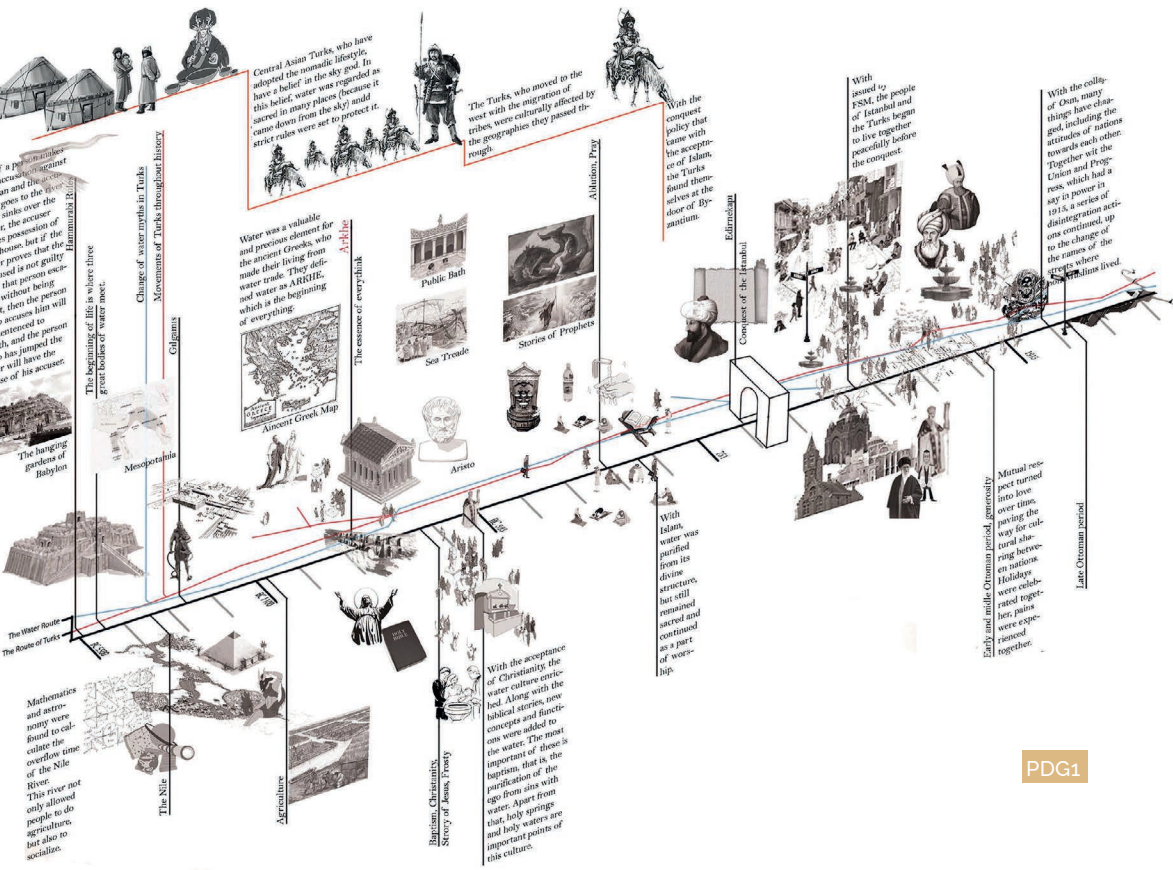
WATER AS A HEALER

WATER AS A POET

WATER AS A RENEWER



As a result of the combination of the routes, we determined the new land use and functions: Healing zone, a reflection zone, a hammam and a mini olympic zone, a holy spring fair zone, the fountain zone, the journey zone, the narrator zone.



PDG1

PROGRAMMING WATER WATER AS A HEALER

- In the footsteps of frosties**
 - Healing gardens: In a belief, every frosty has a different cure for different illnesses. Gardens that we feed with the water of the fountain grow herbs for curing specific illnesses.
 - Reflection of self: A place that allows one to face their own thoughts and feelings.
 - Public baths as a social place: The baths were reconsidered as a social space, inspired by their former use. Healing by social and physical activities.
 - Public open activities
 - Public activities

- Feast Days**: Feast days are celebrated on the birthdays of the person or angel who named the holy spring.
- Mini Olympic Games**: We diversified the sports activities in the bath complexes of the Greeks and turned them into cultural activities that will be applied from certain periods of the year.
- Perform of Minstrels**: Activities to be held on weekends in order to bring the minstrels and the public together.
- Narrative of Journey**: Open all Theaters, Narrative songs.

WATER AS A POET

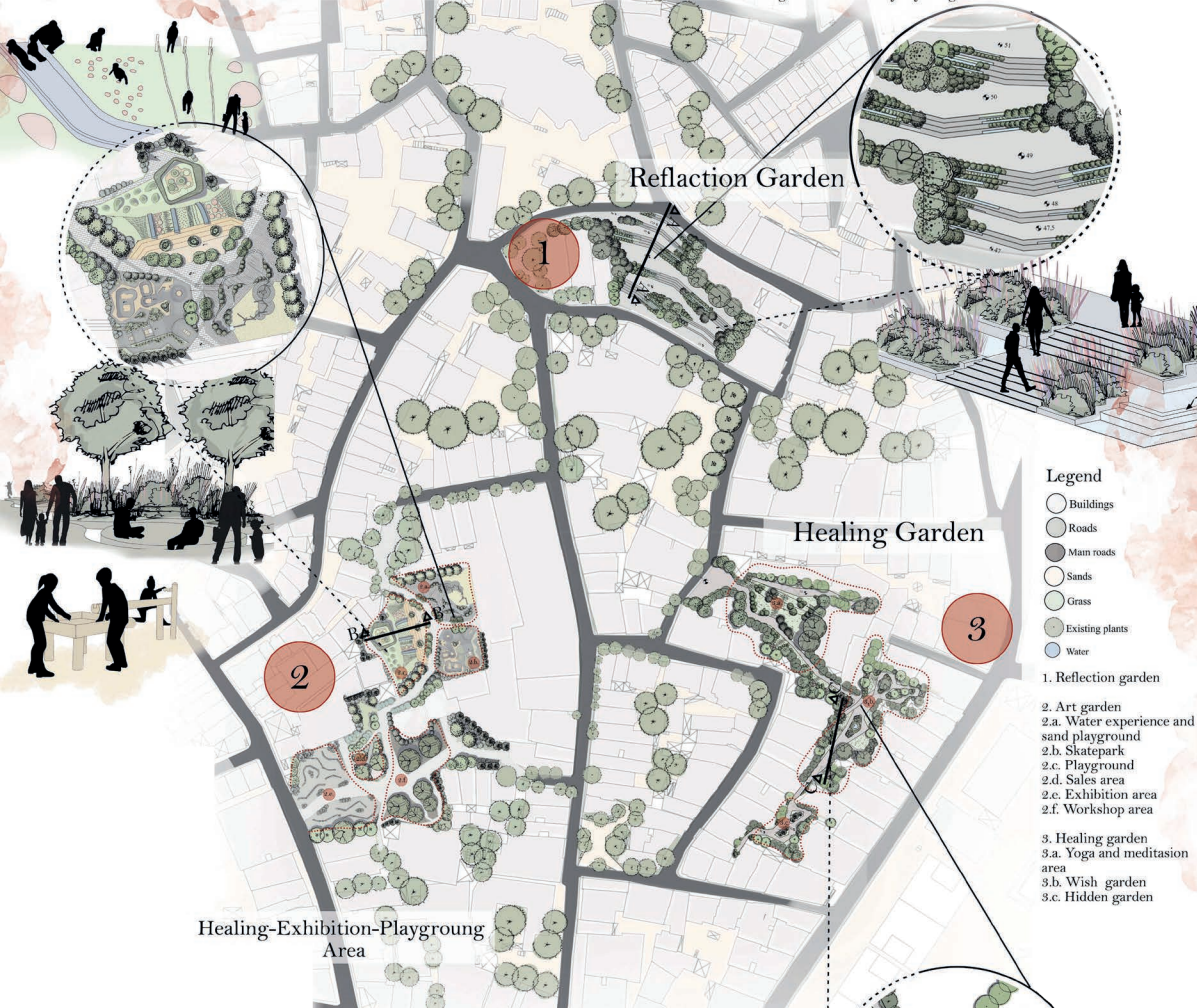
- Grizgah/Introduction**
 - Routes of fountains: Fountains exist as an important intersection point in most of the talks, stories, and events. Influenced by literature and the past of the region, we reprogram the use of fountains.
 - Meeting point: Starting/ending point.
- Medhiye**
- Journey**: We drew a route from the beginning of the curved green waterway to the Golden Horn, the largest body of water in the region.
 - Water showers
 - Open all Museums
 - Viewpoints
- Dilek-Dua/Pray**: The closing part of the poem, the prayer part, is the part that was written to convey good wishes. Based on this, we wanted to close the end of this design with the wish part.
 - wishing pool
 - wish garden

WATER AS A RENEWER

- Kırıkşeme Waterline**: To revive the possible waterline path we have drawn, in order to remind the kırıkşeme line on a small scale.
- Squares**: We want to re-function some of the squares that used to be in the area.
- Lost Values**: Regaining the lost handicrafts.
 - Caving
 - Marbling art

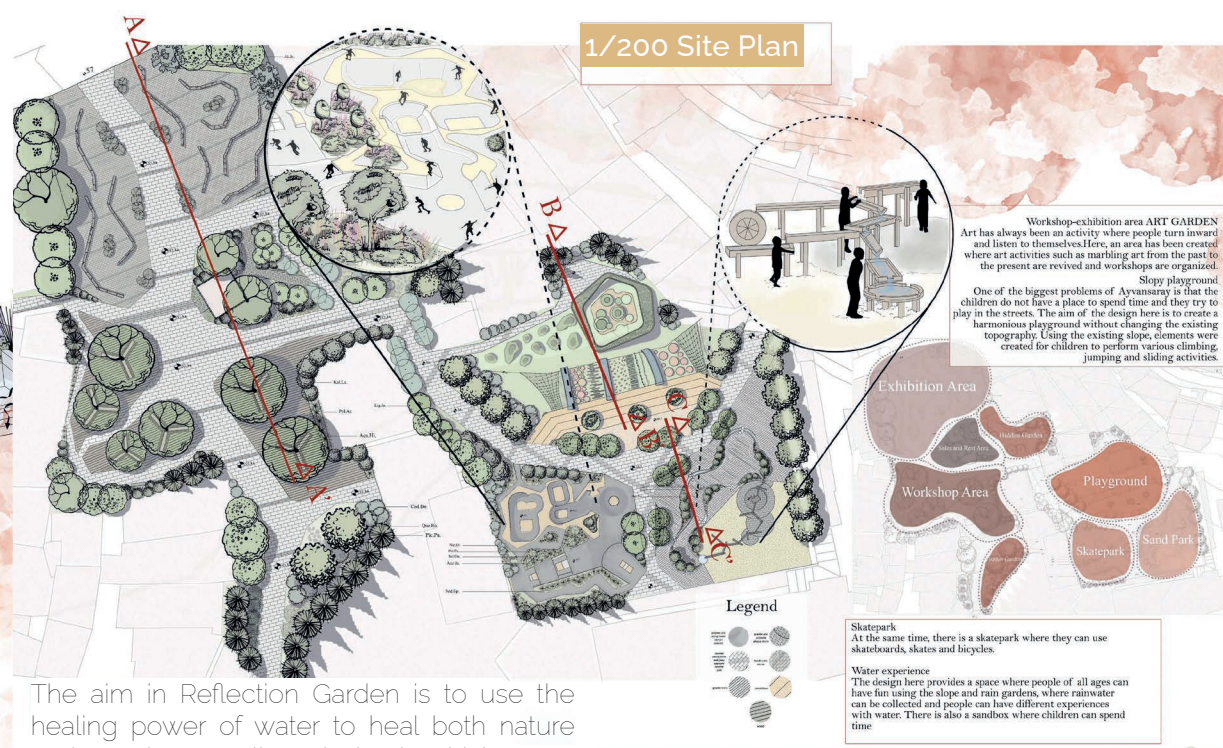
- Hidrellez/Nowruz**: Holidays are celebrated in march and may.





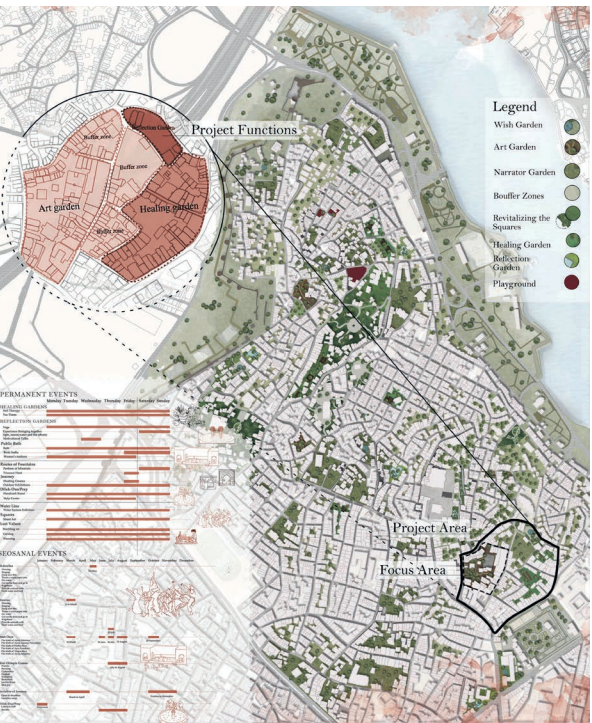
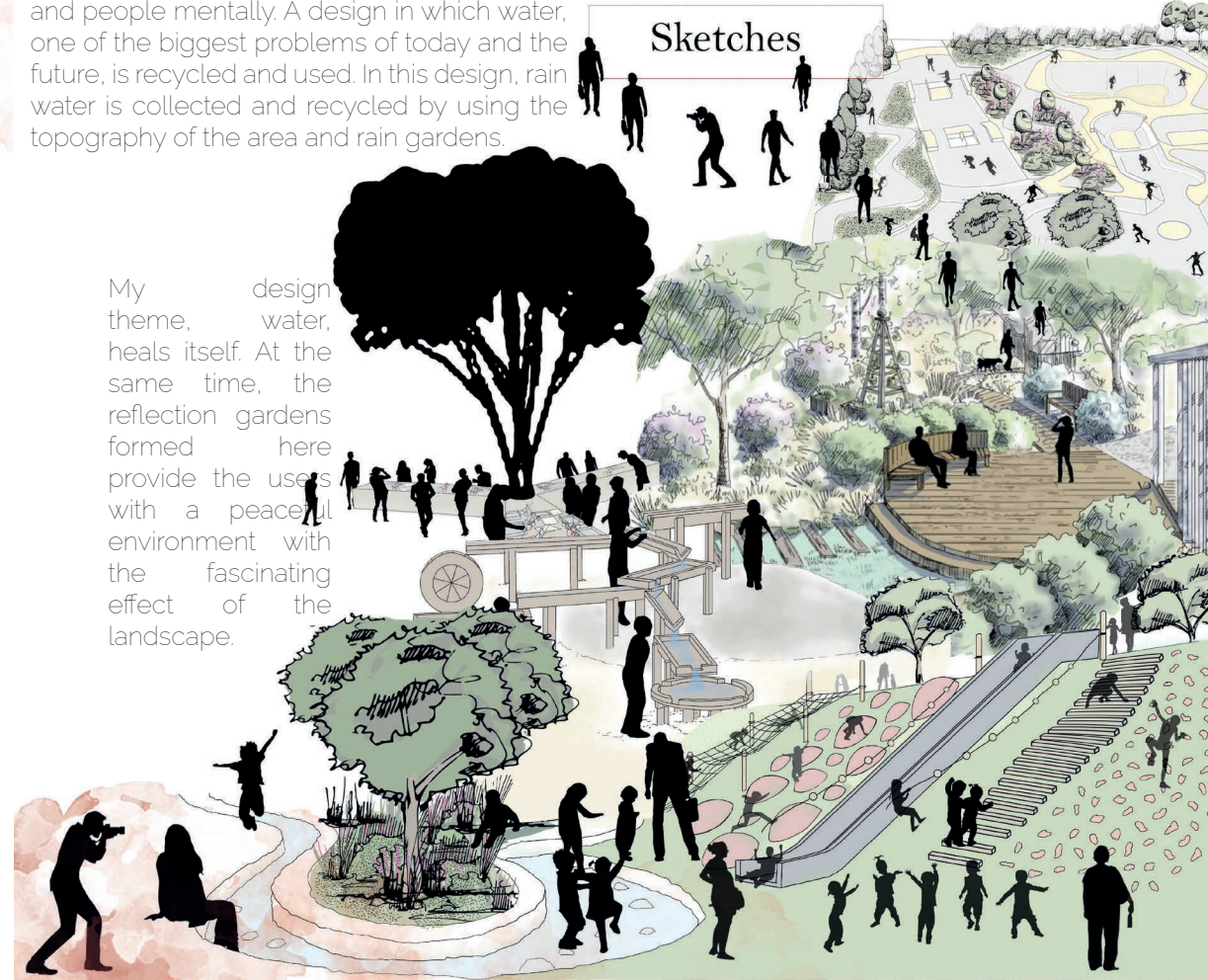
- Legend**
- Buildings
 - Roads
 - Main roads
 - Sands
 - Grass
 - Existing plants
 - Water
1. Reflection garden
2. Art garden
- 2.a. Water experience and sand playground
- 2.b. Skatepark
- 2.c. Playground
- 2.d. Sales area
- 2.e. Exhibition area
- 2.f. Workshop area
3. Healing garden
- 3.a. Yoga and meditation area
- 3.b. Wish garden
- 3.c. Hidden garden

1/200 Site Plan



The aim in Reflection Garden is to use the healing power of water to heal both nature and people mentally. A design in which water, one of the biggest problems of today and the future, is recycled and used. In this design, rain water is collected and recycled by using the topography of the area and rain gardens.

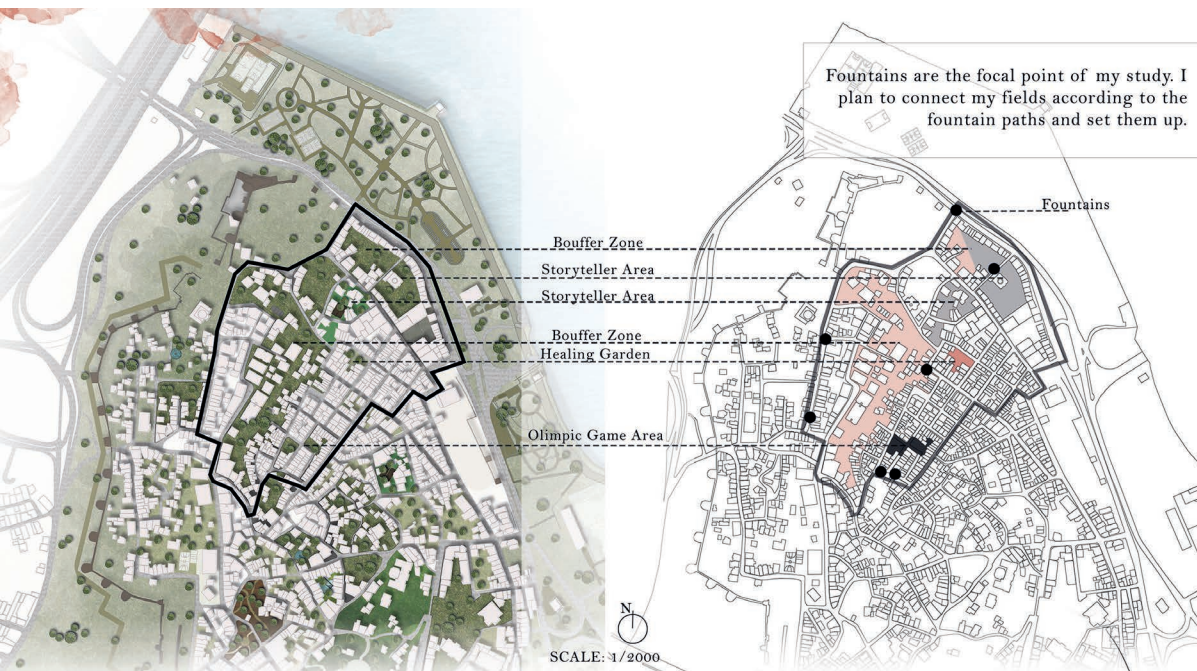
Sketches



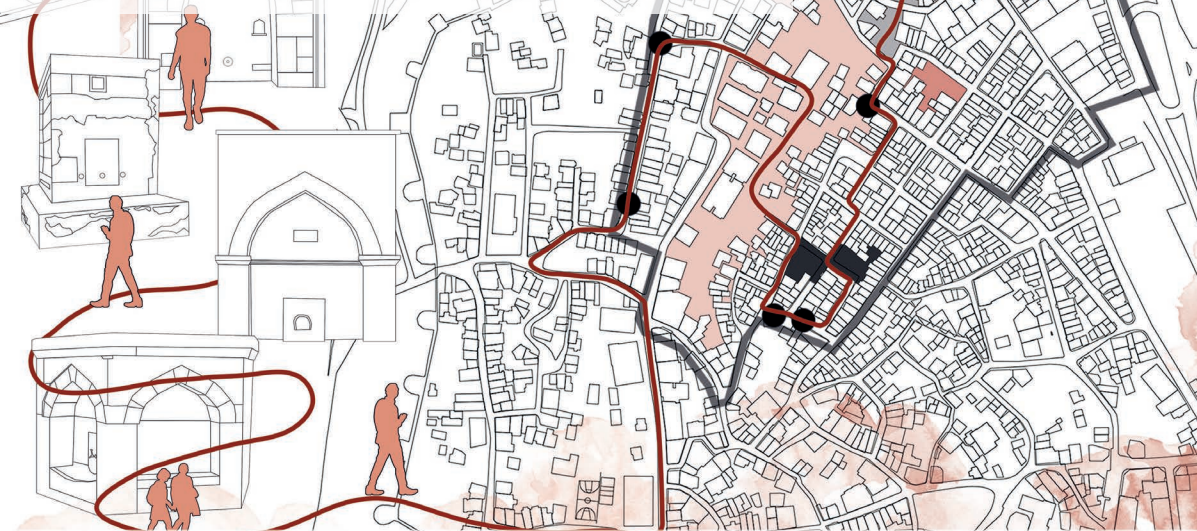
My focus areas are the healing garden, reflection garden and art garden. The main theme is to use the healing property of water in this area. As a result of our analysis, we have seen that water has been used for healing purposes in many cultures from past to present. The purpose of the Healing Garden is to create an area where the residents of Ayvansaray neighborhoods can go inside and heal themselves and find some peace. At the same time, it eliminates the lack of green space, which is one of the biggest problems of Ayvansaray, and provides a natural environment where the locals can socialize.

WATER AS A STORYTELLER

Nergis Şenkaya



We created the functions with the decisions coming from group analyzes. I named the spaces in the project area as connection area - narrator area - healing area and mini-Olympic area. Fountains used to be a means of transporting water to the public, and at the same time, the area around the fountain was like a socializing ring in ancient times. I thought that this would be the most appropriate place to tell the history of water. I created a route for myself by combining the existing fountain paths in the area. With this route, I planned to connect the fields and started to determine the detailed functions of the fields.



I designed our areas within the framework of the route and I created a connection between them through the pavement design. For the narrator's path, I plan to organize various excursions in the area. The narrator will tell the stories of water, myths, and the memory of water while showing people around the area how water has come from the past to the present, as well as how important it is for us. The mobile application includes tour guides, travel maps, water stories, and landmarks, so that people can easily learn about sightseeing tours, travel, and learn on their own when the narrator is not present.

1/200 Site Plan

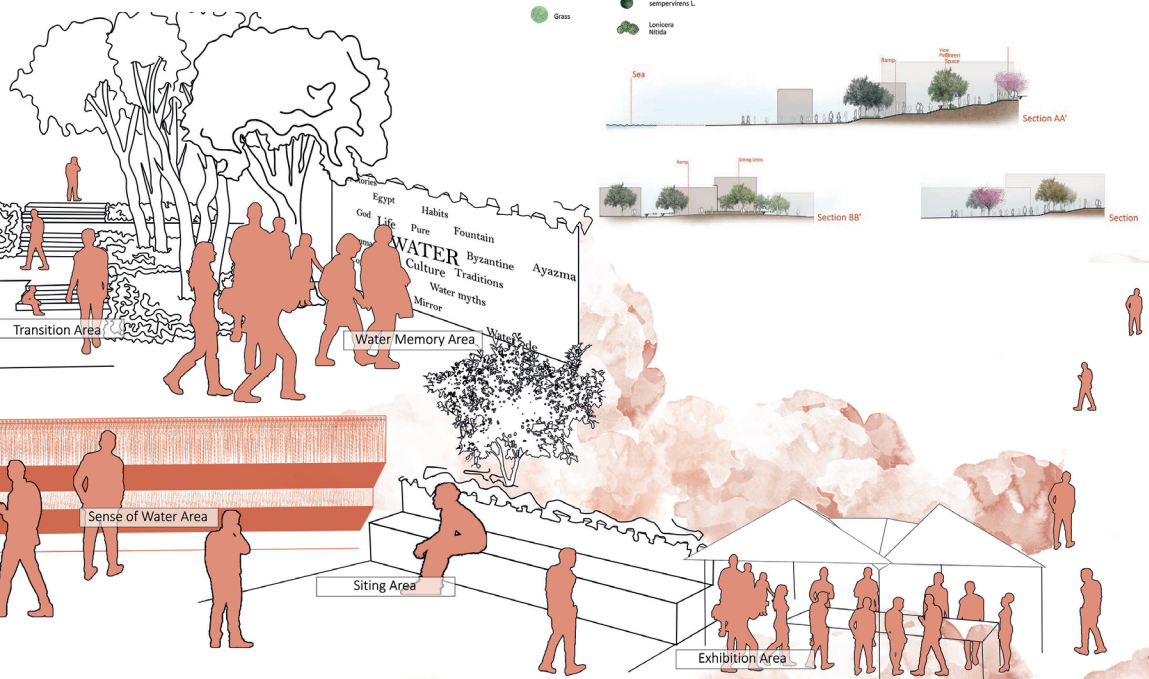


I have seven working zones in 1/500. In my 1st area, people could listen, in my 2nd area was a walled area, and in my 5th area, people could listen to their inner voices, in the 3rd area, people with a change of level could descend into the history of the water in the area, in a celebration area in the 4th area, where people could celebrate celebrations, in my 5th area, Ayazma I created a playground in order to revive the Olympic tradition that was held in the baths in my 7th area, where people can grow medicinal plants, because it is difficult to pass to the street, in my 6th area, based on the theme of using it for diseases in the past because its water and plants are medicinal.

Scale: 1/200

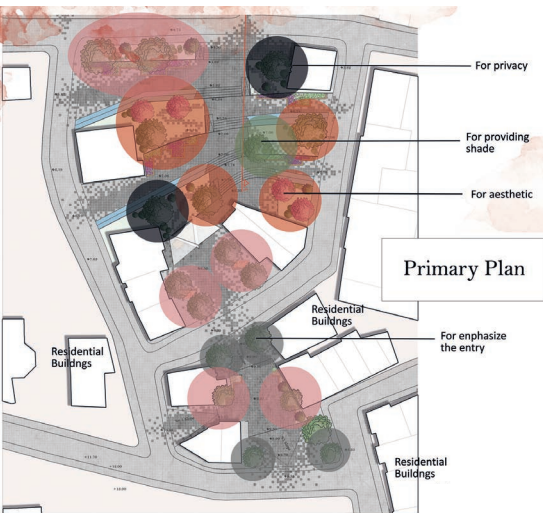
- Plantanus orientalis
- Cercis siliquastrum
- Tilia tomentosa
- Morus nigra
- Cupressus sempervirens L.
- Lonicera sempervirens L.
- Lonicera nitida
- Grass
- Grass

Water Memories



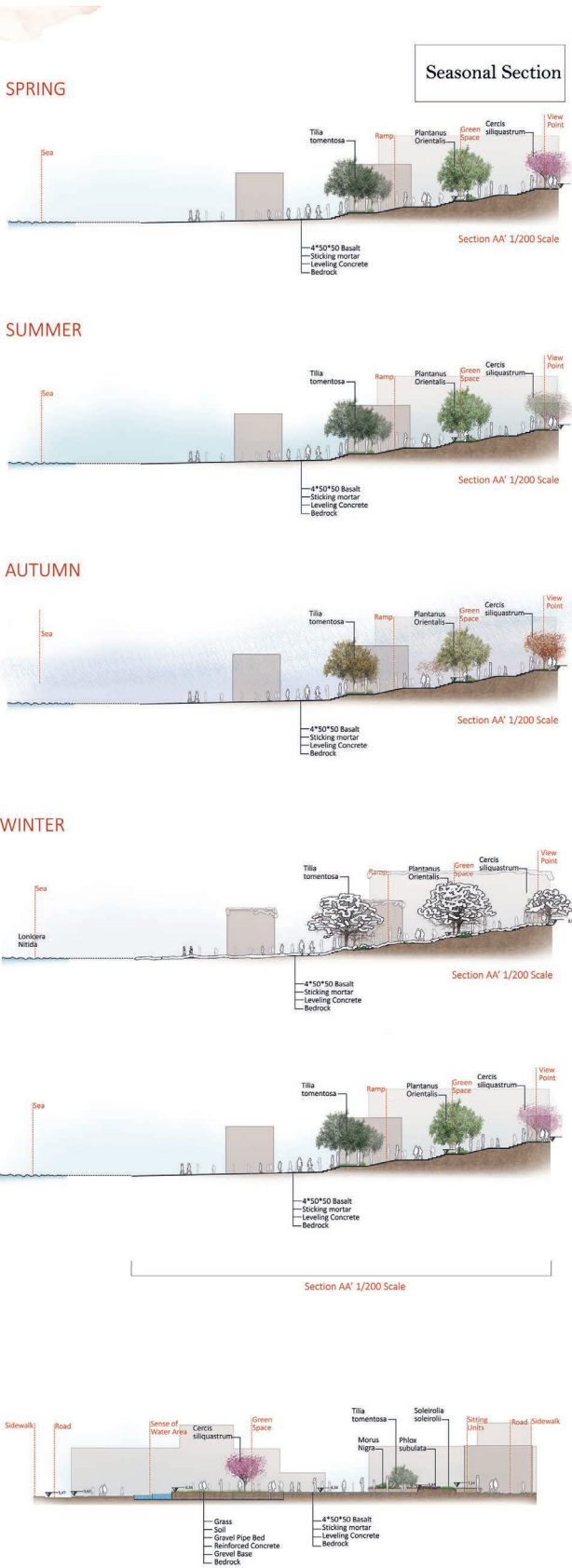
The reason for the difference of the dark gray basalt flooding the streets at 1/200 is to attract people to the area. Since I have a street that will focus on the sea, I gave the stairs from this part. I have added water areas, here I aim to use the feeling of water, as well as to collect water under this platform and use rainwater. I added green areas in the field. While describing the memory of water from the Byzantine and Ottoman Empire, old times are mentioned, so I thought that I could reinforce the narrative of the past and tried to find the plants that existed and integrate them into the field in a natural way.

Planting Concept

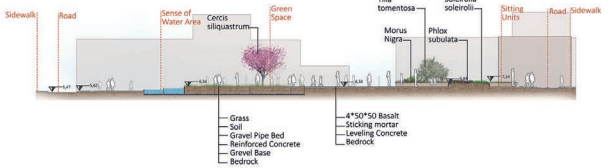


	Jan.	Feb.	March	April	May	June	July	Aug.	Spt.	Oct.	Nov.	Dec.
Plantanus Orientalis												
Tilia Tometosa												
Cercis Siliquastrum												
Cupressus Sempervirens												
Lonicera Nitida												
Phlox Subulata												
Morus Nigra												
Soleirolia Soleirollii												

Abstract Palette



WINTER



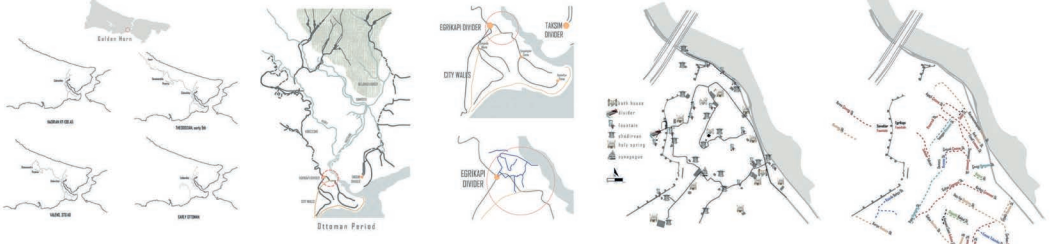
PURIFYING AYVANSARAY

Rabia Ezgi Beyen

Ayvansaray is one of the key locations in the historical peninsula in many aspects such as minor communities of Istanbul, defense system of the city, relationship with the sea, transportation routes, and old water systems. Water structures and buildings outside in the area: hammams, fountains, cisterns, ayazmas, mosques, wells. Each of them was an important element in the daily life and working as a gathering and socializing spaces.

Today, most of them are not being used by anyone as the way people socialize has changed. Gathering and socializing are available with the cafes and concept stores, which is based on special paid spaces rather than public spaces like streets, squares. Unlike in the past, the relations between people are also weak. While water is a gathering tool in the past, today there is a disconnection between people and nature.

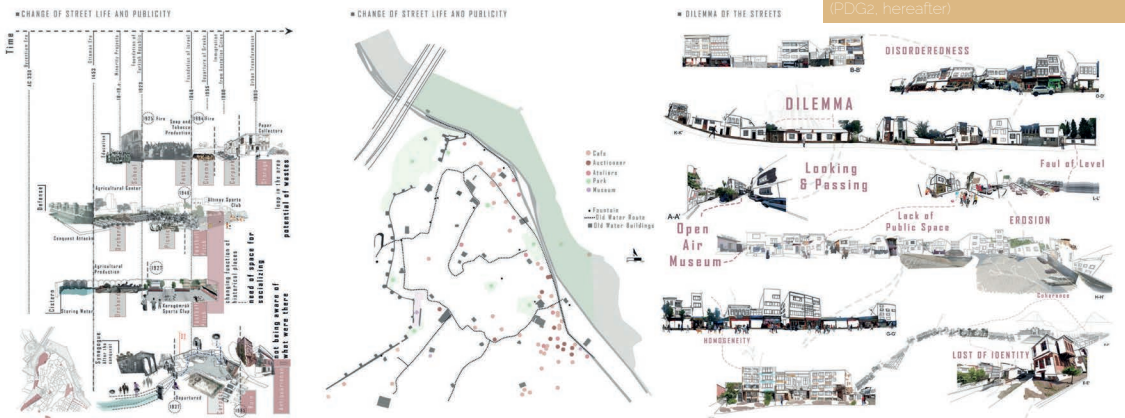
WATER IN ISTANBUL IN THE PAST



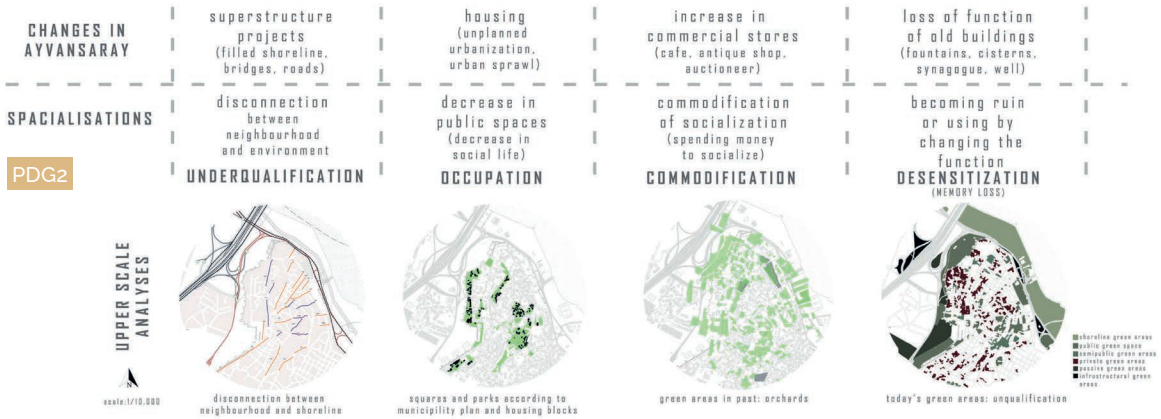
WATER AS PUBLIC SPACE IN THE PAST



PUBLIC SPACE OF TODAY

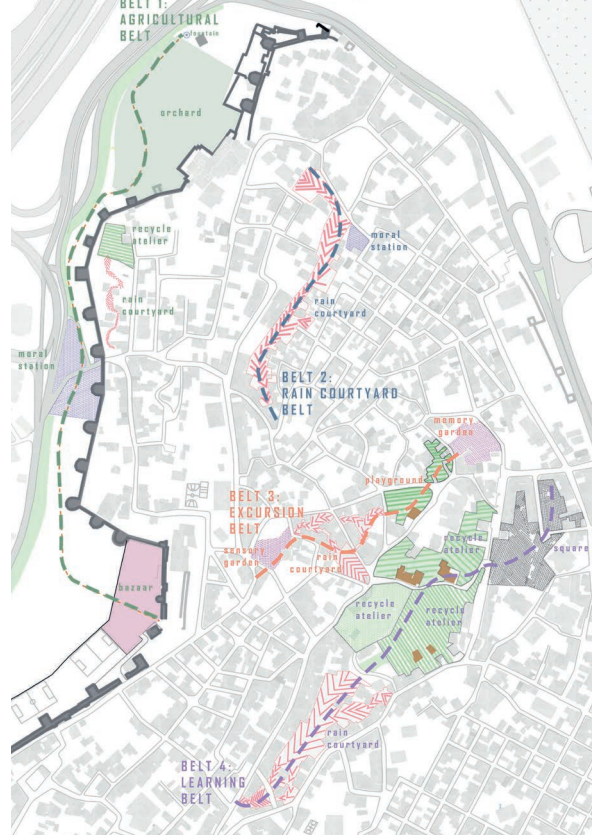


DEGENERATION OF PUBLIC SPACE THROUGH THE TIME



To purify the region from the all negative effects that degenerates the social and natural relationships, a set of programs are decided on the Ayvansaray. 4 streets are chosen as belts with different concepts according to the city development plan. I focused on the outside of the city walls. In group studies, we have decided there as an orchard area. Then I improved it in a way that turns into socializing and gathering place for neighbourhood and also for people from outside. Water is the key element in the space as a tool to bring people together. Orchard is composed of squares (playground and performance), detention pond (gathering water before treatment), retention pond (water treatment), energy bicycles (public contribution to water recycle), cooling corridor for the crops, landscape outdoor classrooms for exhibitions, bazaar, workshops, and lastly agricultural fields. A water channel meanders through the area as a guide. The sloped area nearby the road is planted with trees to create and isolation between the orchard and the traffic. The retention pond stretches to the fountain of the mosque in the area and creates a relationship of old and new water resources.

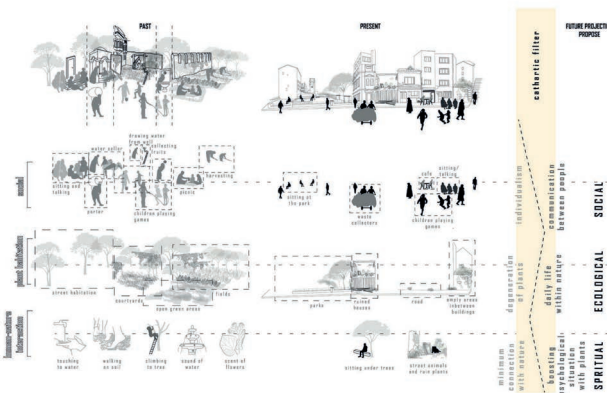
Concept Plan



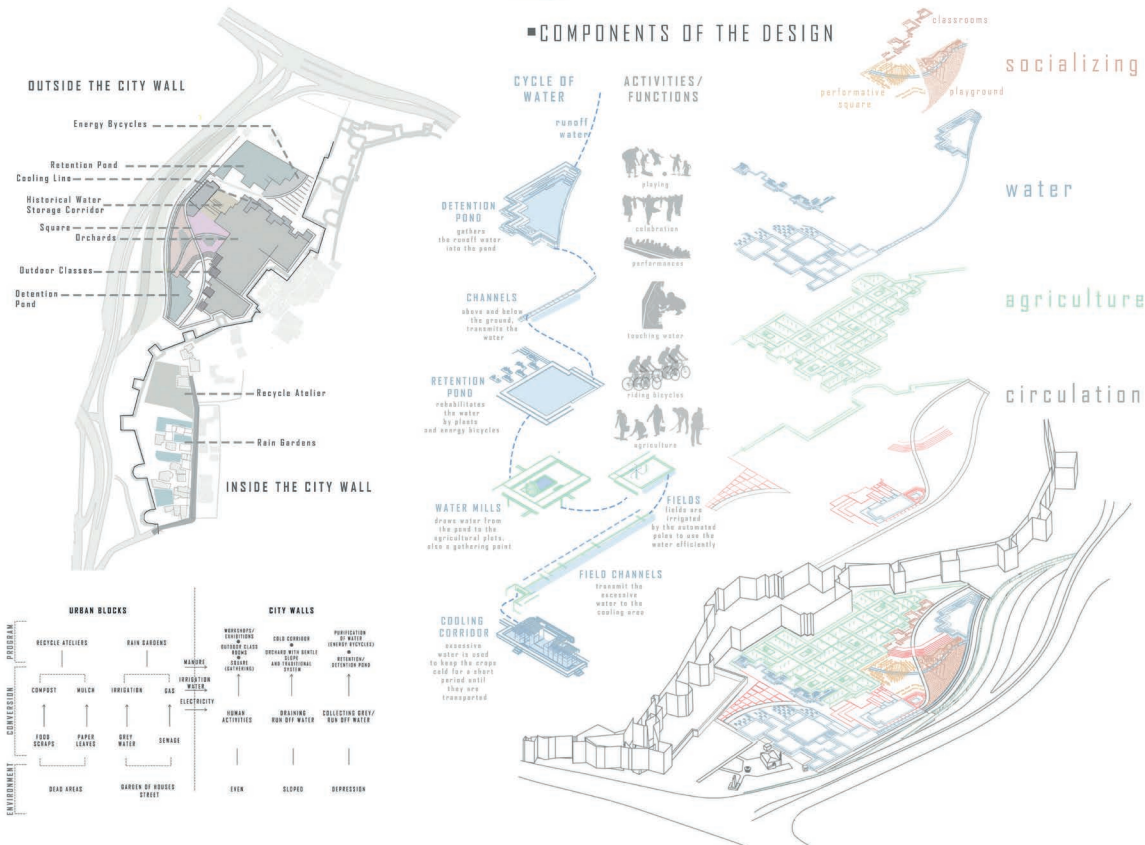
The orchard also has relation with the inner side of the city walls. The available areas in the neighbourhood are used as rain gardens and recycle ateliers, collecting food scraps, paper, gazettes, water and turning them into fertilizers or mulch. This conversion helps the orchard's agricultural activities.

In 1/200 scale, I designed the square, detention pond, agricultural area and the outdoor classrooms. The outdoor classrooms are free areas to have agricultural workshops to teach permacultural techniques so their ground is grass that can be digged. There are a few steps to sit and listen. Detention pond can be used as playground or celebration/performance area during the drought and there is no water. For these activities, I selected terrazzo which is cheerful and appropriate for the program. The playground in the square is also terrazzo composed of two different colors to attract attention. Half is

CONCEPT OF PURIFYING AYVANSARAY

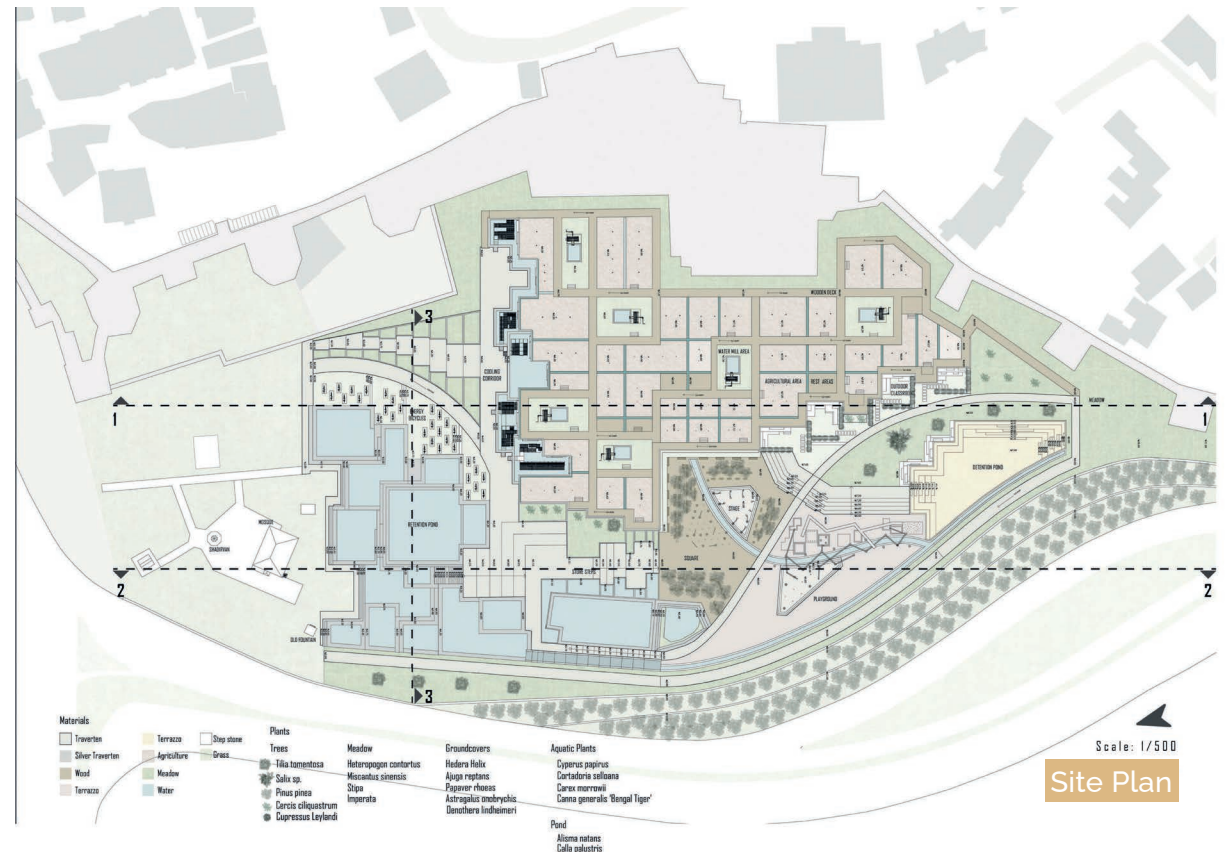
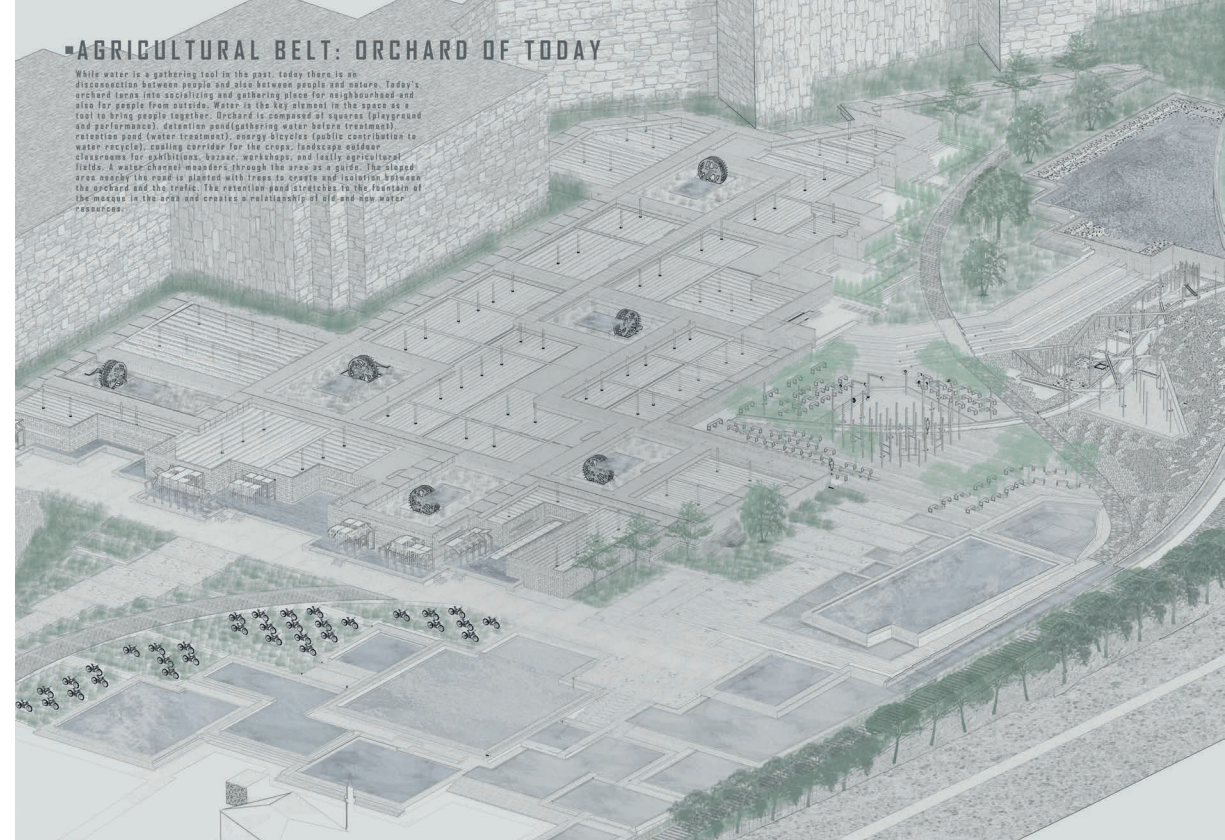


COMPONENTS OF THE DESIGN

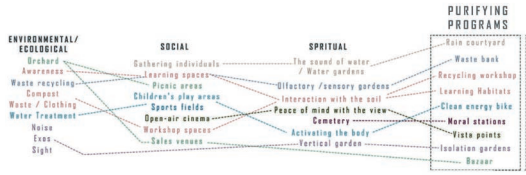


AGRICULTURAL BELT: ORCHARD OF TODAY

While water is a gathering tool in the past, today there is an disconnection between people and also between people and nature. Today's orchard turns into socializing and gathering place for neighbourhood and also for people from outside. Water is the key element in the space as a tool to bring people together. Orchard is composed of squares (playground and performance), detention ponds (gathering water before treatment), retention pond (water treatment), energy bicycles (public contribution to water recycle), cooling corridor for the crops, landscape outdoor classrooms for exhibitions, water, workshops, and finally agricultural fields. A water channel meanders through the area as a guide. The sloped area nearby the road is planted with trees to provide shade and isolation between the orchard and the traffic. The retention pond stretches to the fusion of the mosque in the area and creates a relationship of old and new water resources.

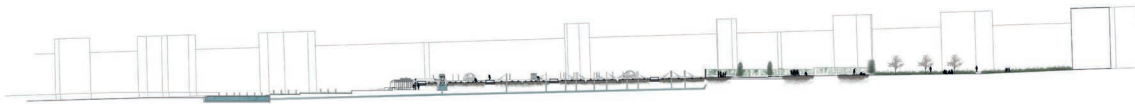
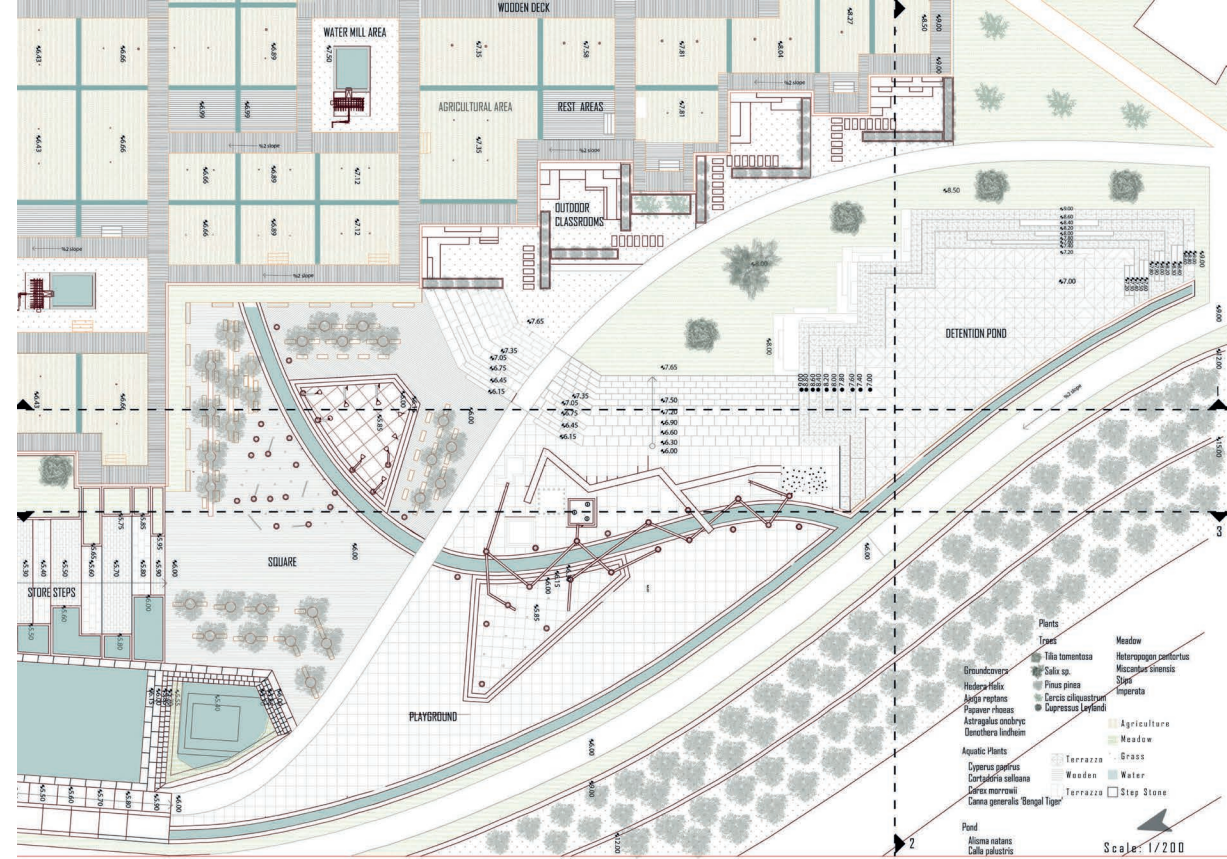


Scale: 1/500
Site Plan



(water experience and exhibition use) and the stage. Lighting elements are similar to water poles. The poles are also used to hang the exhibition materials and also have some bowls and sticks for birds. The agricultural area is designed in a way that transmit the excessive water through the topography by the help of slope and water channels put in an order. The excessive water flow to channels from fields and channels transmit below the area, to the cooling area. It is used to keep crops fresh until they are transported. Then the water is send to the retention pond.

artificial topography that can activate body movement, pther half is related water play via the operable channels and water poles. Other side of the square is composed of water poles



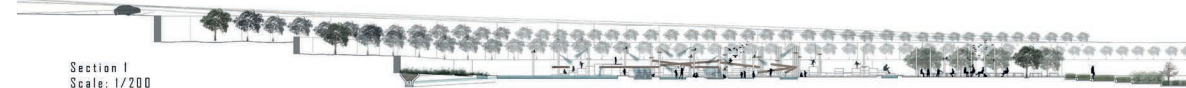
Section 1
Scale: 1/500



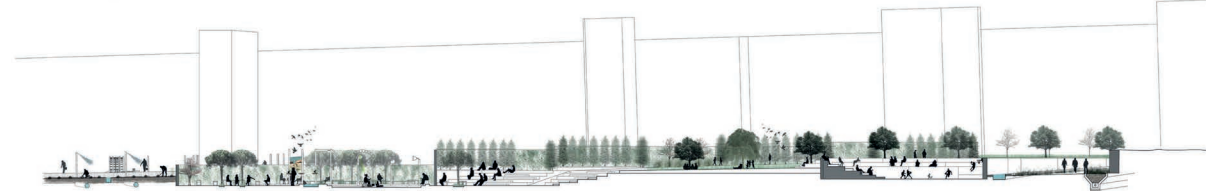
Section 2
Scale: 1/500



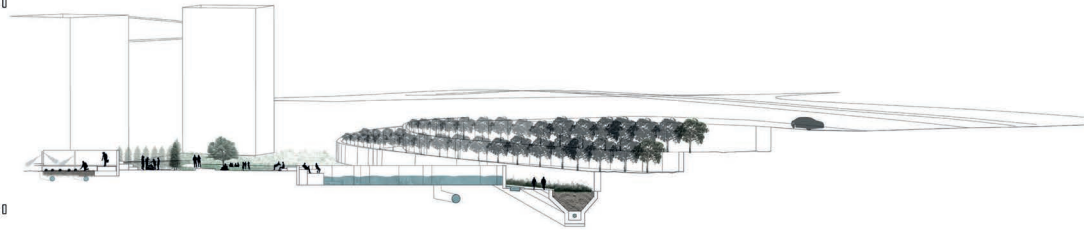
Section 3
Scale: 1/500



Section 1
Scale: 1/200



Section 3
Scale: 1/200



Section 2
Scale: 1/200



■ Cooling Corridor



■ Energy Bicycles to Purify Water



■ Retention Pond



■ Steps to Square, nearby the old water storage



■ Fields and Water Mill



■ Stage



■ Water Poles (exhibition area)



■ Artificial Topography in the Play Square

FROM THE STUDIO...

